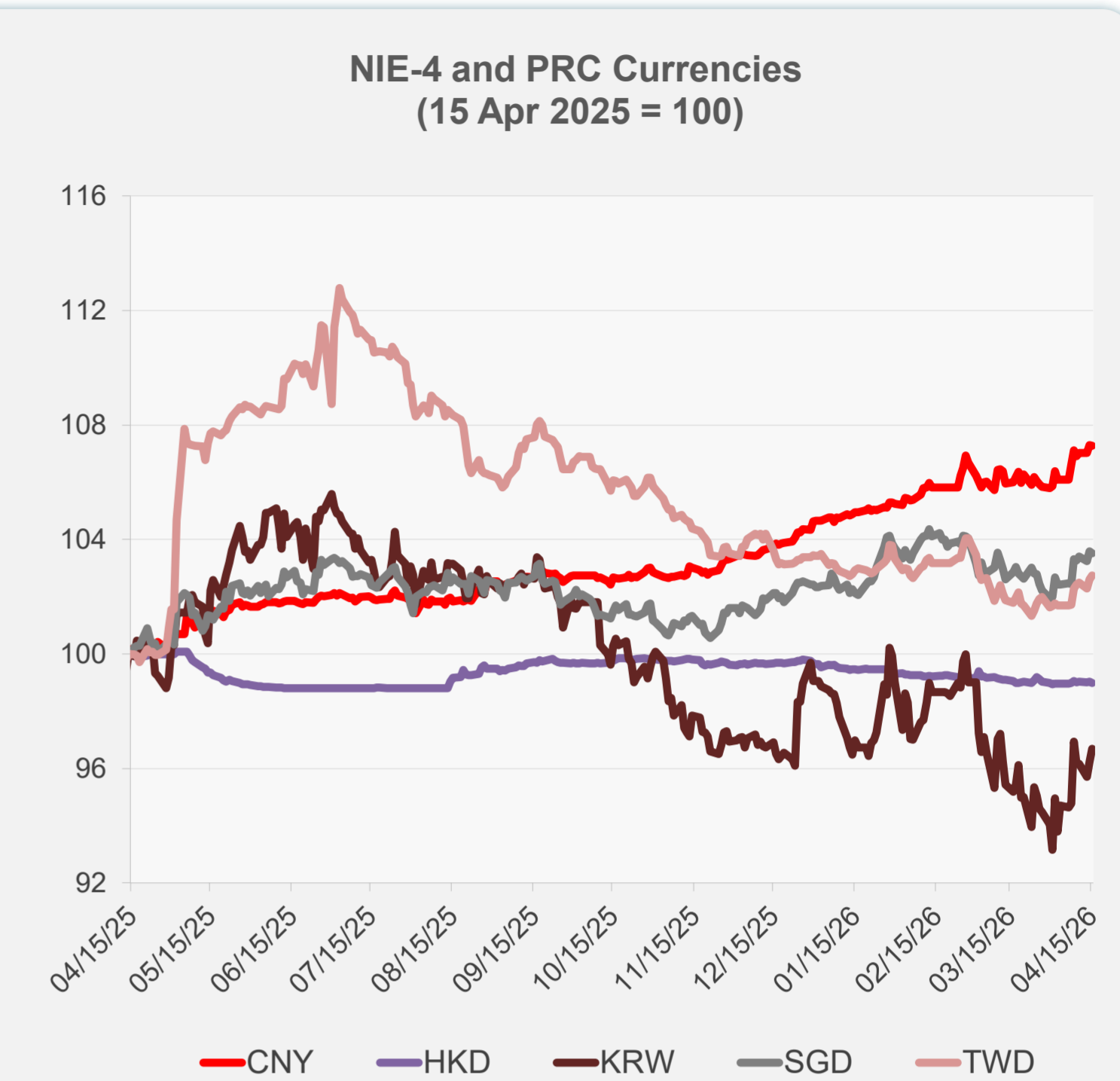
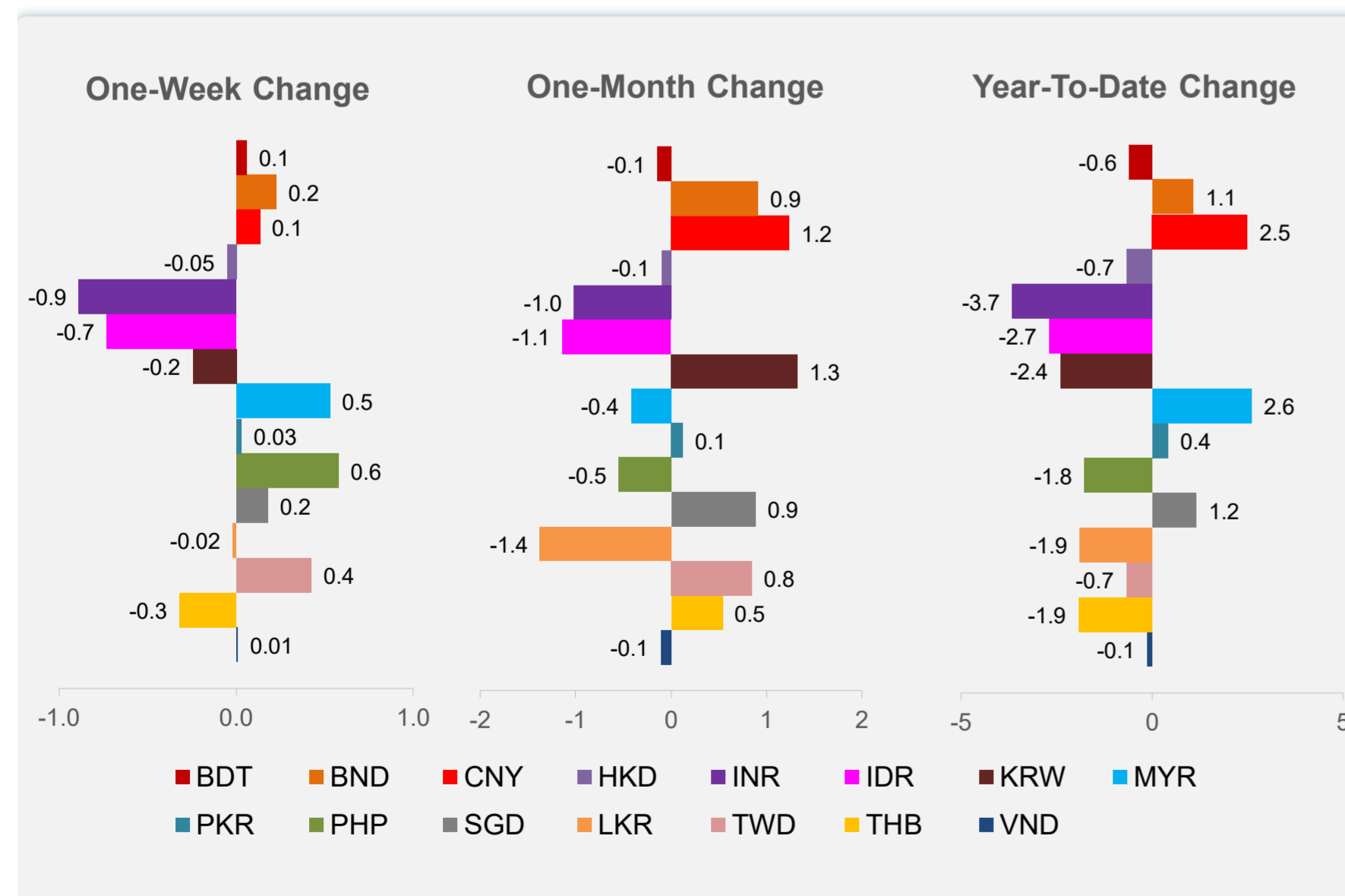
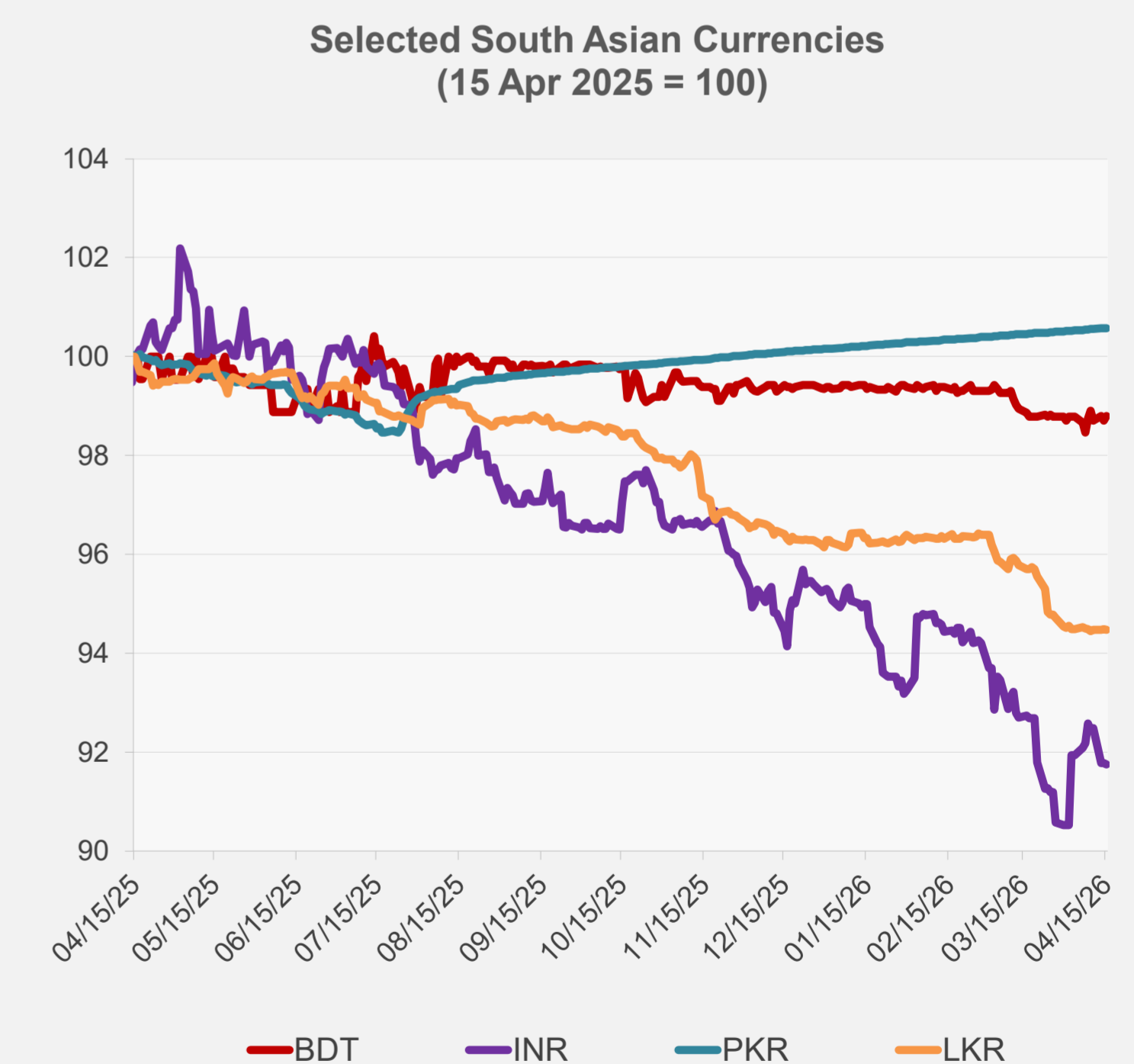
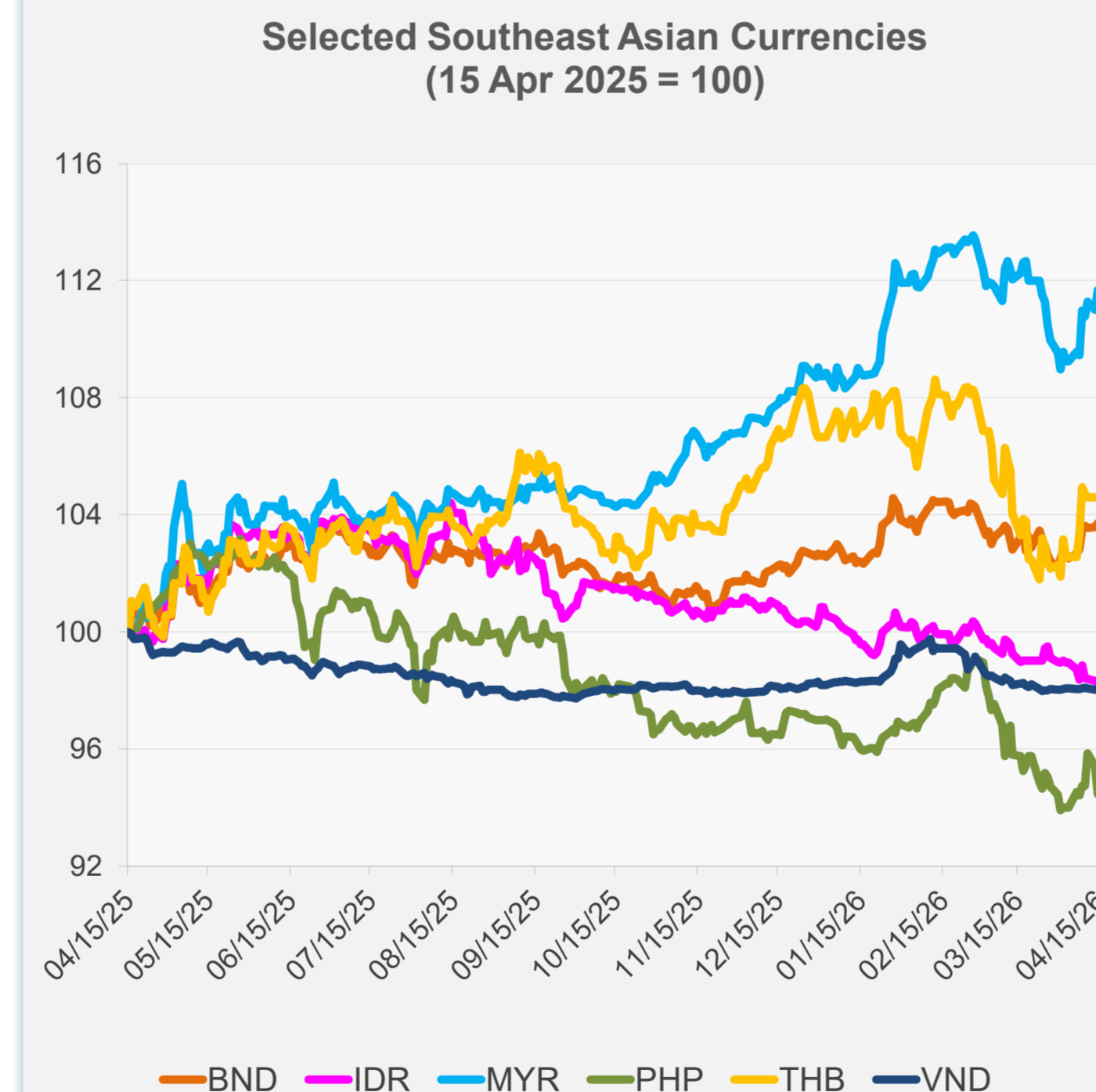


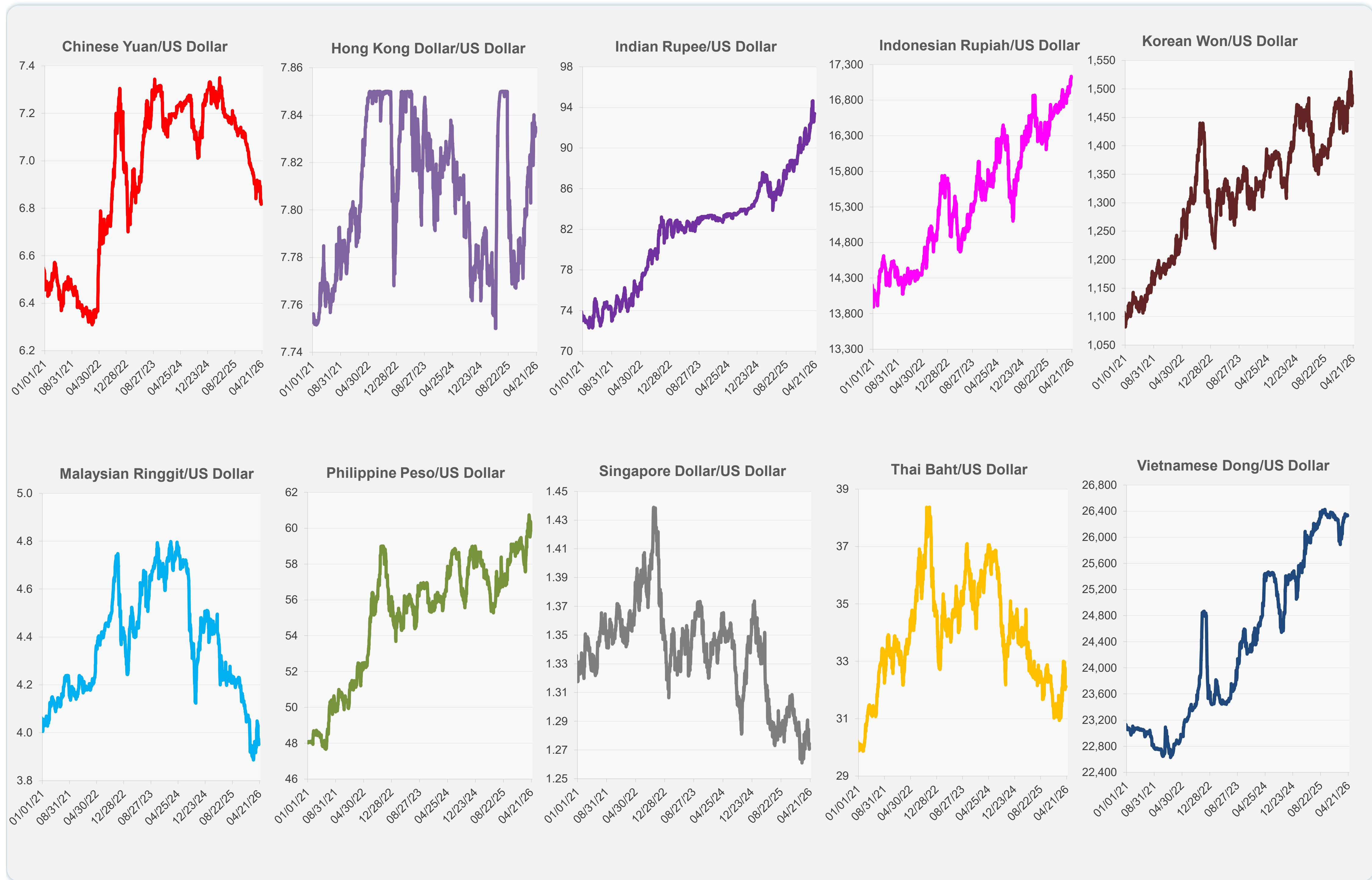
	Latest Closing	% change from Previous Day	% change from 01-Jan-26
Euro	0.85	-0.10	0.45
Japanese yen (JPY)	158.94	0.08	-1.86
Bangladeshi taka (BDT)	122.98	0.10	-0.59
Brunei dollar (BND)	1.27	0.03	1.08
Chinese yuan (CNY)	6.82	-0.02	2.49
Hong Kong dollar (HKD)	7.83	-0.03	-0.66
Indian rupee (INR)	93.39	-0.02	-3.65
Indonesian rupiah (IDR)	17,135.00	-0.12	-2.68
Korean won (KRW)	1,474.20	0.47	-2.39
Malaysian ringgit (MYR)	3.96	-0.10	2.60
Pakistan rupee (PKR)	278.95	0.00	0.41
Philippine peso (PHP)	59.86	0.86	-1.76
Singapore dollar (SGD)	1.27	-0.07	1.16
Sri Lanka rupee (LKR)	315.55	-0.02	-1.89
Taipei,China NT dollar (TWD)	31.65	0.13	-0.67
Thai baht (THB)	32.12	0.00	-1.92
Vietnamese dong (VND)	26,330.50	0.05	-0.12



NIE = Newly Industrialized Economies



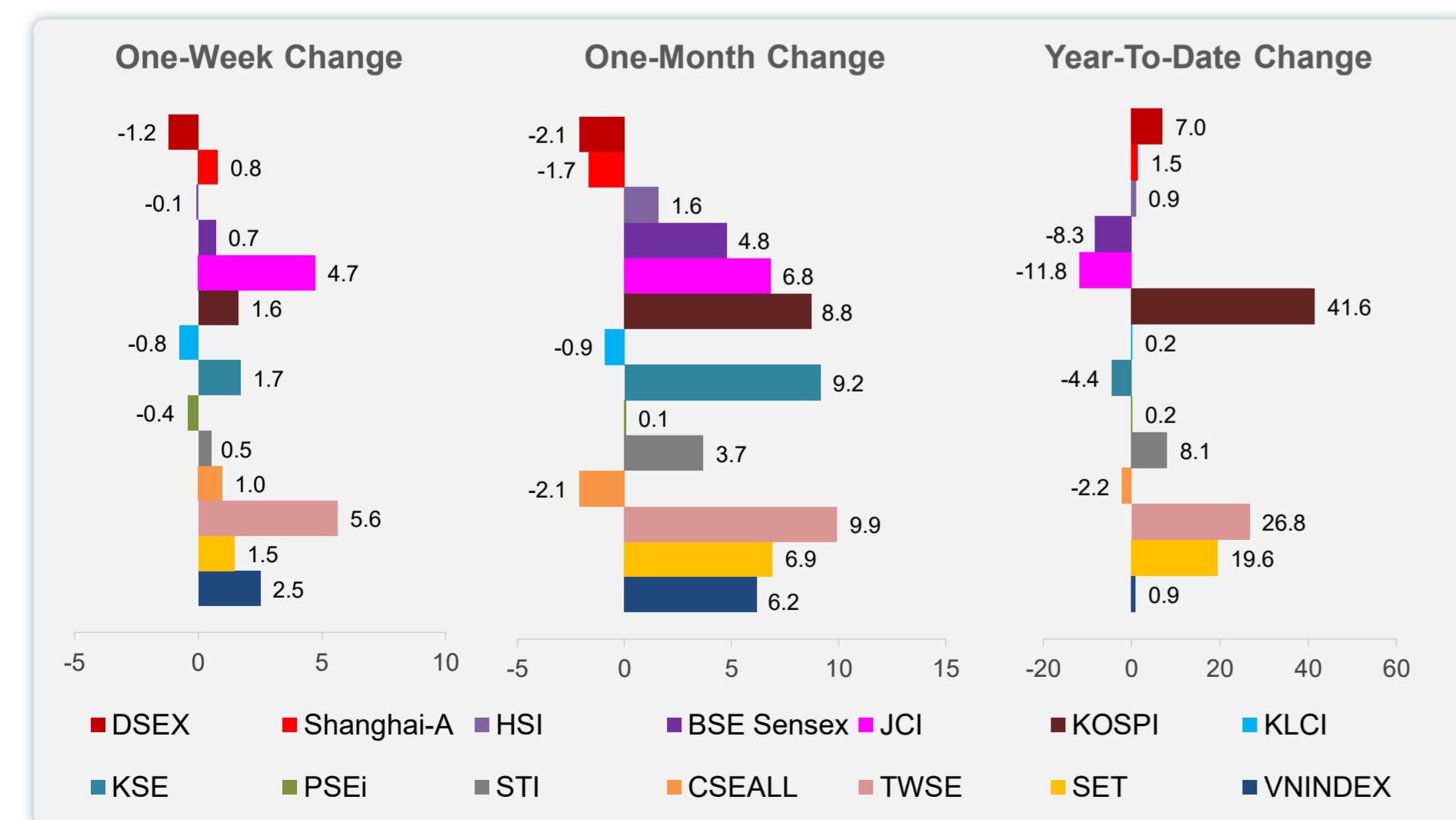
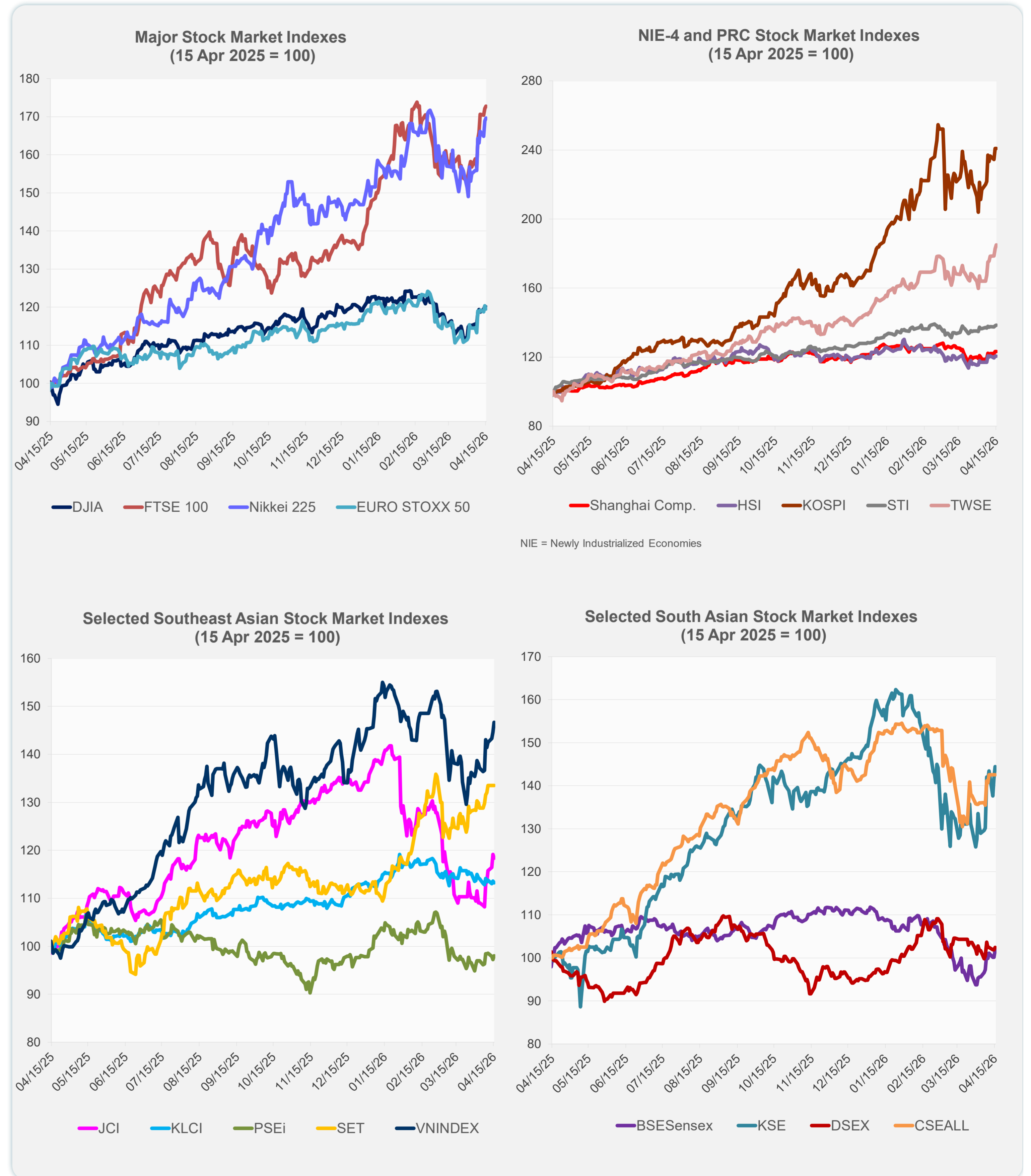
Note: Negative/Decreasing values indicate depreciation of local currency, and positive/increasing values indicate appreciation.  
Source: ADB calculations using data from Bloomberg and Haver Analytics.



Source: Haver Analytics.

Daily Market Watch  
**STOCK INDEXES**

	Latest Closing	% change from Previous Day	% change from 01-Jan-26
US Dow Jones Ind Avg	48,463.72	-0.15	0.83
US NASDAQ	24,016.02	1.59	3.33
US S&P 500	7,022.95	0.80	2.59
UK FTSE 100	14,252.38	0.35	26.56
EURO STOXX 50	5,940.34	-0.74	2.57
Japan NIKKEI 225	58,134.24	0.44	15.48
Bangladesh DSEX	5,255.00	0.47	7.01
PRC Shanghai Comp.	4,026.63	0.00	1.46
Hong Kong, China HSI	25,872.32	0.00	0.94
India BSE Sensex	78,111.24	1.64	-8.31
Indonesia JCI	7,623.59	-0.68	-11.83
Korea, Rep. of KOSPI	5,967.75	0.00	41.61
Malaysia KLCI	1,683.42	-0.28	0.20
Pakistan KSE 100	168,659.60	1.87	-4.43
Philippines PSEi	6,063.35	0.84	0.17
Singapore STI	5,021.20	0.27	8.07
Sri Lanka CSEALL	22,128.66	0.00	-2.19
Taipei, China TWSE	36,722.14	1.17	26.79
Thailand SET	1,506.84	0.00	19.62
Viet Nam VNINDEX	1,800.65	1.41	0.91



Sources: ADB calculations using data from Bloomberg and CEIC Data Company.

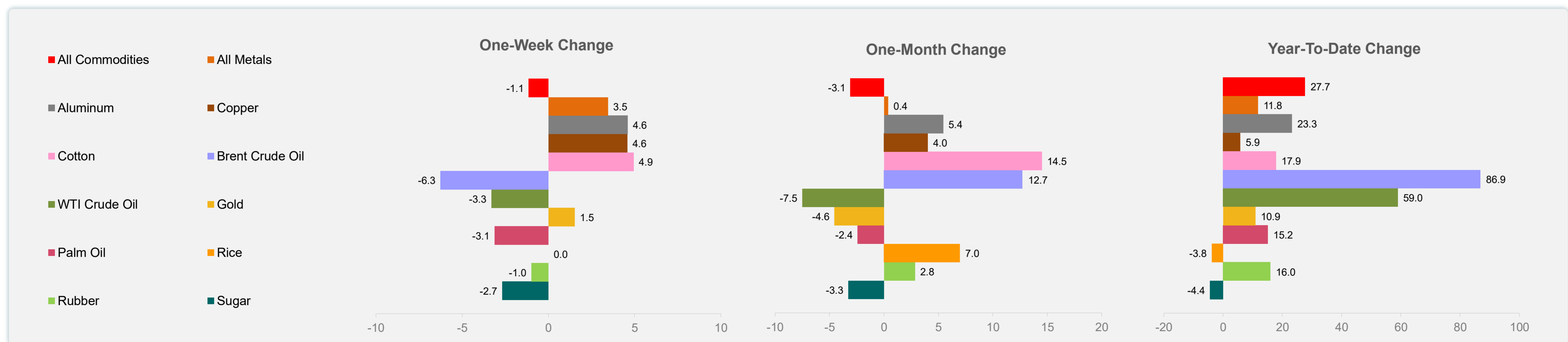
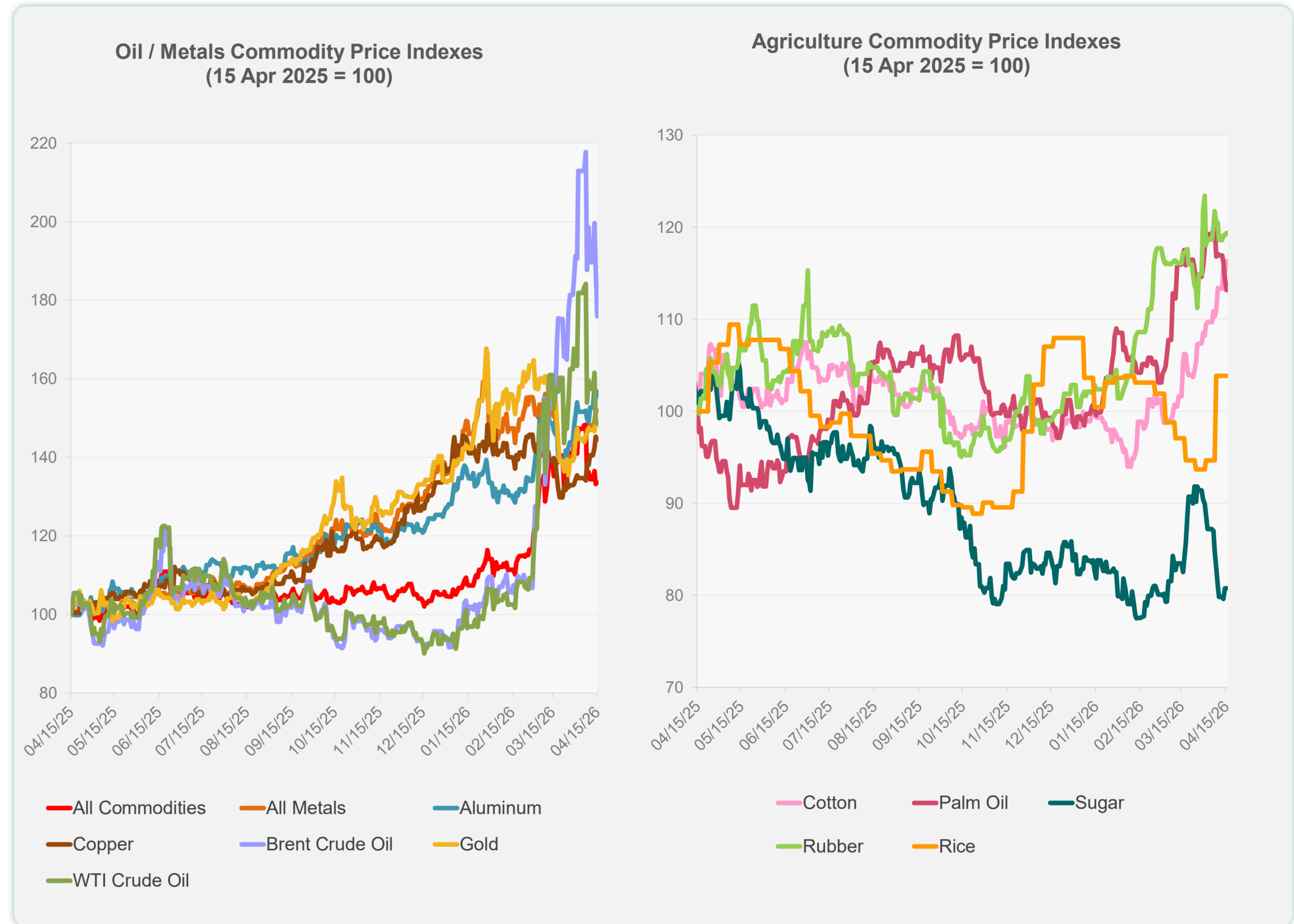


Sources: ADB calculations using data from Bloomberg and CEIC Data Company.

Daily Market Watch  
**COMMODITY PRICES**

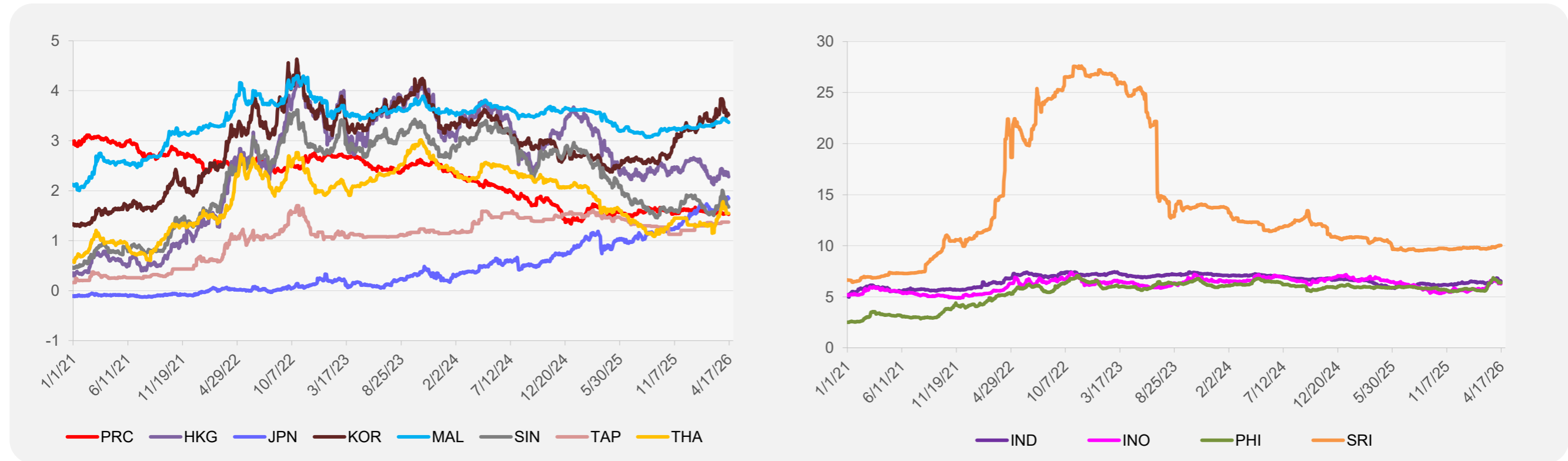
	Unit	Latest Closing	% change from Previous Day	% change from 01-Jan-26
S&P All Commodities	US\$	700.56	0.35	27.72
S&P All Metals	US\$	496.30	0.25	11.84
Aluminum	US\$/metric ton	3,659.02	1.10	23.28
Copper	US\$/metric ton	13,188.66	-0.49	5.90
Cotton	US cents/lb	73.11	1.06	17.88
Brent Crude Oil	US\$/barrel	116.74	-6.34	86.94
WTI Crude Oil	US\$/barrel	91.29	0.01	58.99
Gold	US\$/troy oz	4,791.04	-1.05	10.92
Palm Oil	US\$/metric tonne	1,115.46	-1.08	15.16
Rice <sup>1</sup>	US\$/metric ton	429.00	0.00	-3.81
Rubber <sup>2</sup>	US\$/kg	249.50	0.20	16.05
Sugar	US cents/lb	14.14	0.00	-4.39

<sup>1</sup> Latest closing price from 8 April 2026.  
<sup>2</sup> Singapore Exchange, Ribbed Smoked Sheet Rubber.

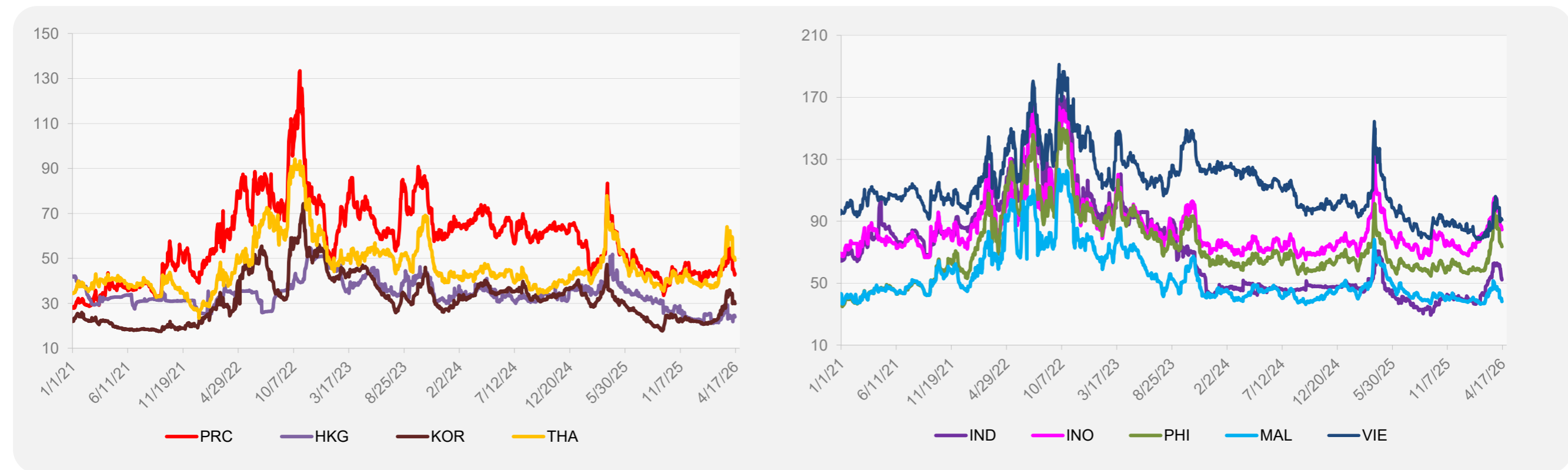


Source: ADB calculations using data from Bloomberg.

### 5-YEAR LOCAL CURRENCY GOVERNMENT BOND YIELDS (%)



### 5-YEAR CREDIT DEFAULT SWAP<sup>1</sup>



<sup>1</sup> In USD and based on sovereign bonds.  
Source: ADB calculations using data from Bloomberg.